

Hardware & Software Solutions for

- Estimating
- Collaboration
- Job Site
- Conference Room
- Project Management
- Hardware & Software
- Training
- Archiving
- Client Turnover
- **iProjectCloseout**



Your Choice!



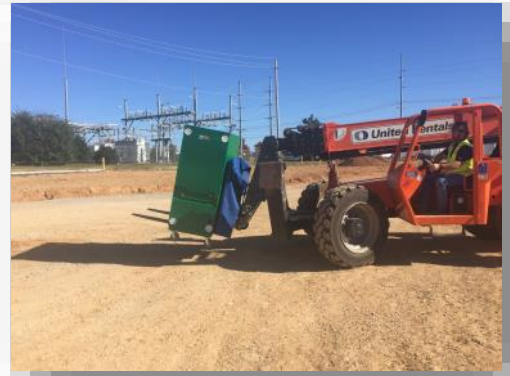
iPlanTables

Helping You See the Big Picture

Nationwide Sales & Service



The Nation's
Leading Provider
of AEC Work-
stations Now in
43 States



It's a Power.....ful Tool!

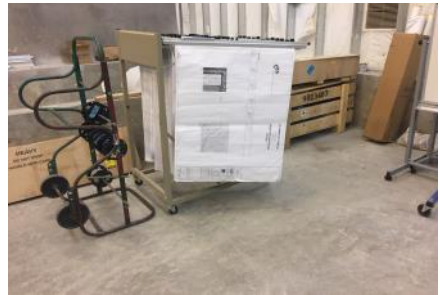


Everyone on the Project Team Needs the Right Tools

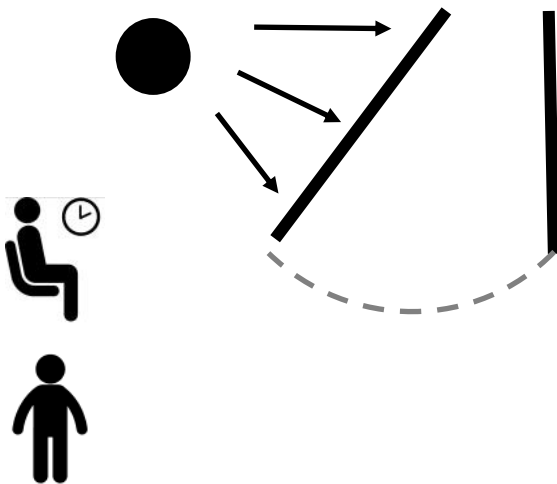


Forget the Past

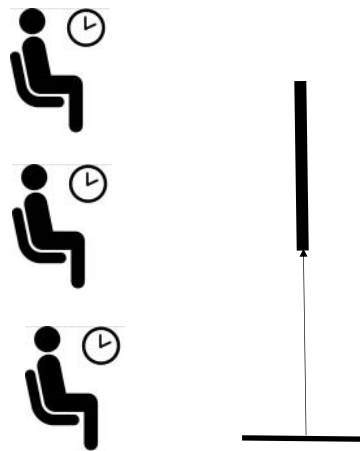
Actual iPlanTables install sites
And the tools we are replacing



iPlanTables Benefits



Sit or stand mode



7 Foot tall teaching & training mode

- Universities
- Designers
- Estimators
- Plan Rooms
- BIM Coordinators
- Project Managers
- Hospitals
- Schools
- Building Owners
- Facilities Maintenance
- File Rooms
- Real Estate
- Training
- Disaster Response Teams
- Developers
- Design Programs
- City Planners
- Animators
- GIS Departments
- Medical Imaging



Our iPlanTables Workstations (we have 6) are like Swiss army knives, one day we use it to collaborate and discuss the project information, then we wheel it over to our conference table for a BIM coordination meeting. Then we raise it up for safety meetings and subcontractor meetings.

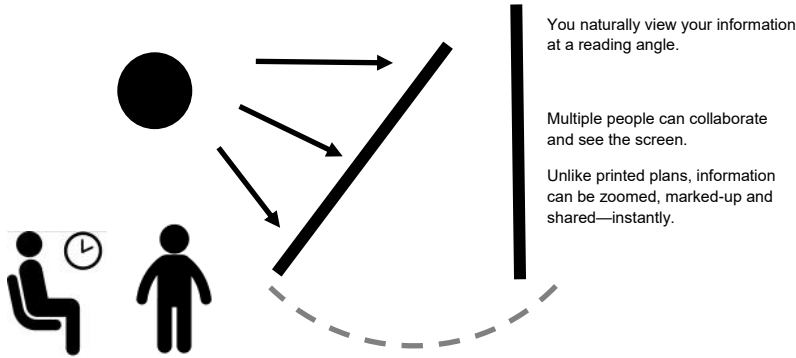
At the end of the project we build a closeout app and turn it over to client for long term archiving, all with the same workstation, The clients love it instead of rolls of paper and three ring binders! The whole project benefits.

iPlanTables client with multiple workstations

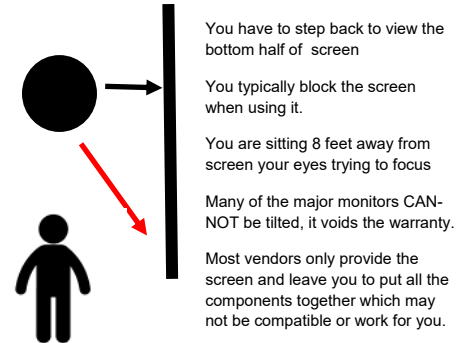
ALL iPlanTables come with our patent-pending floating FULL size keyboard and mouse adjustable work surface—perfect for your programs shortcut keys, email creation and CAD key functions

It's All About About the Physics

iPlanTables Workstations



Typical Wall Mount or Projector Screens



iPlanTables provides complete workstations

- Sit - Stand - Training Settings - Electric Lift & Tilt
- Touchscreen Monitors
- 2nd & 3rd Side monitors
- CAD Level PC's - Apple TV - Android
- Virtual and Standard Keyboard & Mouse
- Integrated CPU Holder
- UPS Power Supplies
- Webcam
- Design & Construction Software
- Collaboration Software
- Multiple Hardware Vendors

Standard AV or screen reseller

- Limited choices
- Limited knowledge.
- No 2nd & 3rd Side monitors
- Digital signage low powered PC's - No BIM
- No keyboard or mouse
- Low powered players
- You have to provide UPS Power Supplies
- You have to provide webcam
- No knowledge of AEC software needs, 3D, 4D, and BIM Models
- No industry specific technical knowledge, what really works and what doesn't.



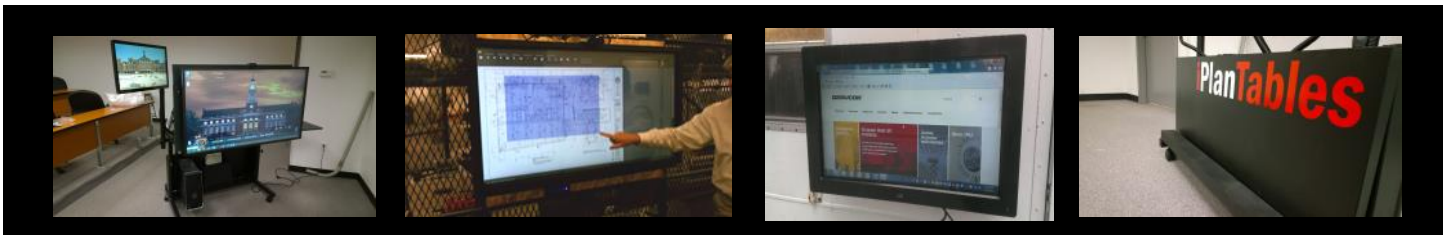
20% of an AEC professional's time is spent managing information. iPlanTables converts those lost minutes back to your project.



No more expensive and time-consuming plotting and printing is needed. Synchronize your information digitally across all platforms.



iPlanTables allows you to really see your information and digitally take it off. No more squinting or tired eyes. No more unnecessary printing!



The Real Advantage is Moving the Information in Minutes not Hours

iPlanTables Workstations digital workflow advantages

- Expanded work area. Think about it, you don't use a small desk, why would you use a small monitor? In so many cases your desk is simply a monitor holder.
- Reverse the process, your iPlanTable is the desk, with side tables that allow you and your team to communicate instantly
- Decisions that used to take days can now be handled in minutes.
- Touchscreens improve the human experience, touch is natural and instinctive-and customers that use an iPlanTable provide feedback that it actually makes working with the documents enjoyable.
- iPlanTables come with industry leading collaboration, mark-up and project management tools.
- iPlanTables are open source and any existing softwares or future expansion are supported
- Project information retrieval happens in seconds, no more sorting through piles and piles of papers.

Paper based collaboration disadvantages

- Plotting and printing costs—average internally plotted sheet cost is \$3.60 per sheet
- Employee cost to manage plotted or printed sheets—What should they be spending their time on?
- **Time -Time-Time** The biggest misunderstood information cost on any project. Construction requires constant collaboration, the time it takes to print, deliver and **wait** for decisions to be made is a definitive contributor to delays in your schedules.
- The information is outdated the minute you print it, we have seen new project information change hourly.
- Once printed it has the potential (and often does) of conveying the **wrong information** to hundreds of project team members.
- Notifications of new documents is spotty and many times missed



20% of an AEC professional's time is spent managing information.

iPlanTables converts those lost minutes back to your project.



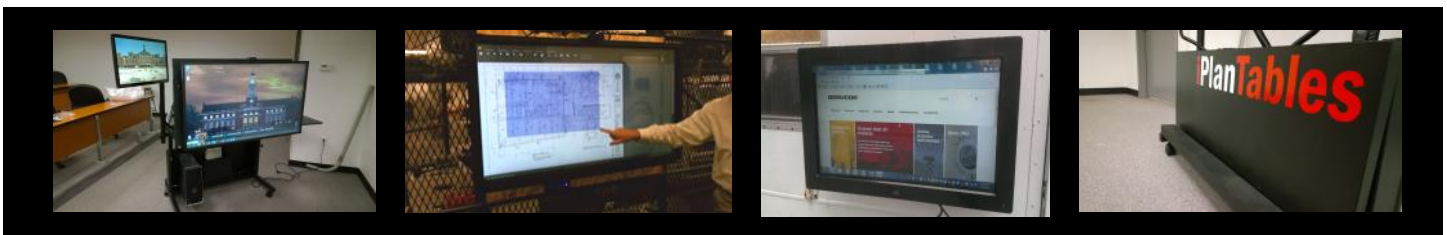
No more expensive and time-consuming plotting and printing is needed.

Synchronize your information digitally across all platforms.



iPlanTables allows you to really see your information and digitally take it off. No more squinting or tired eyes.

No more unnecessary printing!



Wide Format Touchscreen Workstations

FM Portable Workstation

There is nothing on the market that is as versatile as an iPlanTable FM Model.

With the ability to replace far away wall mount monitors, projectors & screens.

The iPlanTable FM is a perfect Swiss Army Knife for offices, project trailers and project information kiosks.

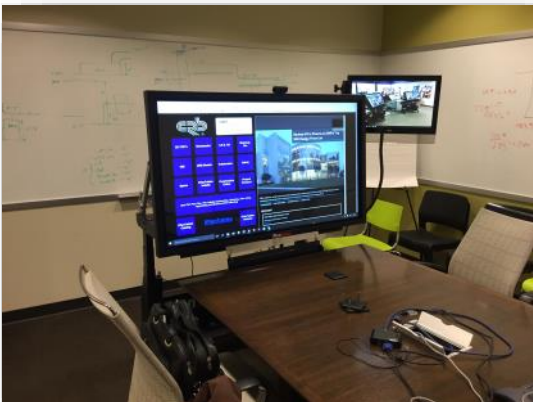
Important differences include a standard swing away keyboard and mouse (our patent) in addition to a virtual keyboard.

A second monitor specs, spreadsheets or any critical information. A side table for laptops, phones or guest connections.

An iPlanTable is much more productive than a monitor on a stand and provides a turnkey all in one solution.



Collaboration Station Mode



Small Meeting Mode



Safety & Training Mode (55" HDR)



Surface Powered



Sit down Mode (55" 4K PCAP)



Flat Mode



FM Electric Lift and Tilt - ELT



FM Manual Lift and Electric Tilt FM - MLET

FM Portable Workstations

- 46" - 55" touchscreen monitor
 - i7 PC—Surface Tablet or client can furnish
 - 16gb-1tb-NVidia
 - 2nd monitor
 - Electric Lift & Tilt (ELT)
 - Manual Lift and Tilt (MLET)
 - Integrated Keyboard & mouse work surface
 - Webcam
 - UPS

FM-ELT55 HD 55" \$12,300

FM-ELT55 4K PCAP 55" \$13,500

FM-ELT46HD 46" \$11,300

electric lift and tilt

FM-MLET 55" \$10,800

FM-MLET 4K PCAP 55" \$12,500

FM-MLET 46" \$9800

manual lift electric tilt

Options

- Surface powered
- Intel Xeon Processor
- NVidia Quadro 2000,4000,8000
- External hard drive
- Conference Cam
- Wireless Collaboration Station

FM-46" Double Decker

FM-MLET46 HDIR

46" x 2 mobile-wall mount Double-Decker

In one of the industry's most power "Mission Control" configurations, the iPlanTables Double-decker provides a power solution to maximize space while providing a complete touchscreen workstation with a wall or stand mounted 2nd monitor.

46" HD	\$11,800
46" 4K PCAP	\$12,800
2nd monitor mobile stand	\$850



iPlanTables Double Decker

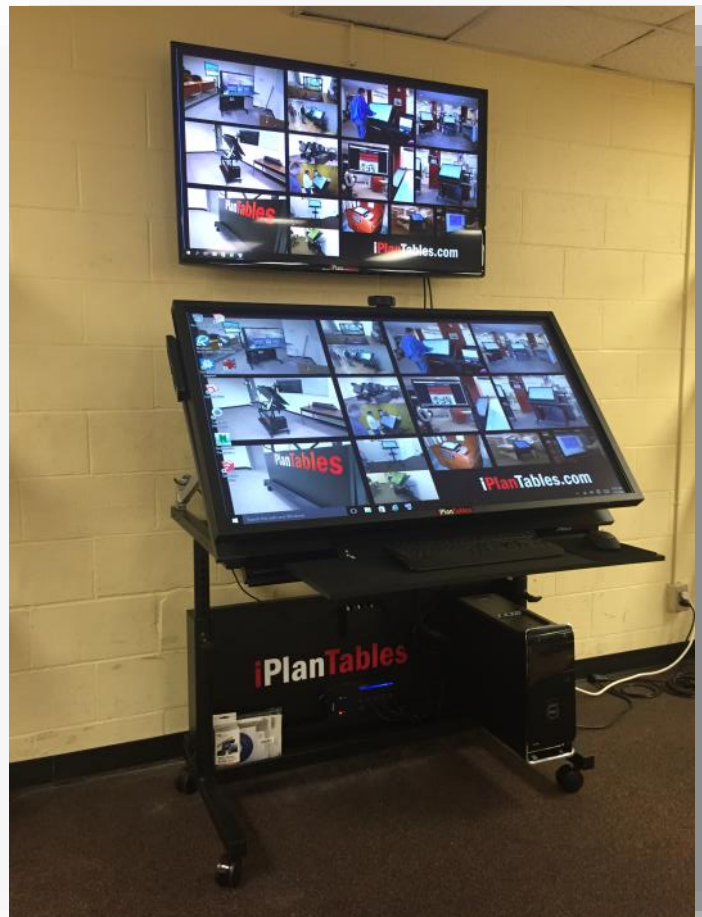
The 46" Double Decker from iPlanTables is a complete turn-key solution that doubles the information collaboration area

- i5 PC - i7 - Surface Tablet optional or client can furnish CPU
- 2nd monitor
- Manual Lift and Electric Tilt (MLET)
- Integrated Keyboard & mouse work surface
- Webcam
- UPS

Options

55" Monitors

i7 - Xeon - Surface Powered CPU



FM-Value Series Model Manual lift and tilt



42" TouchMonitor with PC

iPTVS-42

\$7500.00

Customer furnished PC

iPTVSNPC42

\$7000.00

- 42"-46" Touchscreen Monitor
- Casters
- PC
- HD Graphics



46" Touchscreen Monitor with PC and Webcam



46" TouchMonitor with PC

iPTVS-46

\$8500.00

Customer furnished PC

iPTVSNPC46

\$7800.00



PM Workstation

- 55" Monitor
- Touchscreen
- i7 PC or client can furnish
- 16gb-1tb-NVidia
- 2nd monitor
- Integrated Keyboard & Mouse
- Webcam
- UPS Battery back-up

55"		\$12,300
55"	60T PCAP	\$13,300
55"	4K PCAP	\$13,300



Options

- Intel Xeon Processor
- NVidia Quadro 2000,4000,8000
- External hard drive
- Conference Cam
- Wish List



Field Commander



Turn-key mobile Information Command Center

Don't settle for pieces and parts. And do you really want to trust your project critical information needs with your ladder supplier?

iPlanTables is a trusted technology provider nationwide with installations in 43 states.

Call 877-801-9939 or email info@iplantables for more information

46" HD **\$9800**

46" 4K PCAP **\$11,000**

iPlanTables Field Commander

The Field Commander from iPlanTables is a complete turn-key solution

Mobile Enclosure

i5 PC-Mouse-Keyboard

46" Industrial Grade monitor

Tablet Charging Stand

Touchscreen

380 pounds

Fits Thru standard doorways

Options

i7 CPU - Xeon CPU - Waterproof CPU

Waterproof Monitors



Already have a gang box? Let iPlanTables retrofit it for you! Monitor-PC-Keyboard & Mouse-Printer



FM-WMT-Wall Mount



46" - 85"

Complete Turnkey Solution

Docking Station

Tilting

Integrated Keyboard & Mouse

Webcam



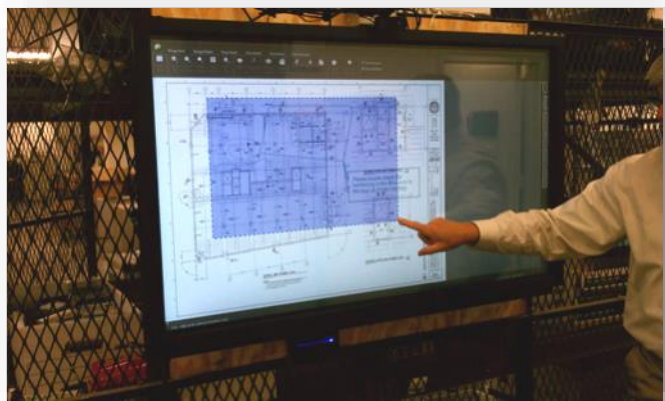
46" HD \$5900

55" HD \$6500

55" 4K \$8,700

85" \$9500

Tilt mount \$1800



Options

External hard drive

Conference Cam

Wireless Collaboration Station

Miller Imaging & Digital Solutions is an authorized iPlanTables reseller.

Contact:
Miller Imaging & Digital Services
P: 512.478.8793
eMail: info@millerids.com
www.millerids.com

